

# **ELECTRICAL FIRES CAN BE PREVENTED!**



**By PowerCheck**





**IN THIS WELL KEPT OLDER HOME...**



# A SERIOUS FIRE HAZARD WAS PRESENT



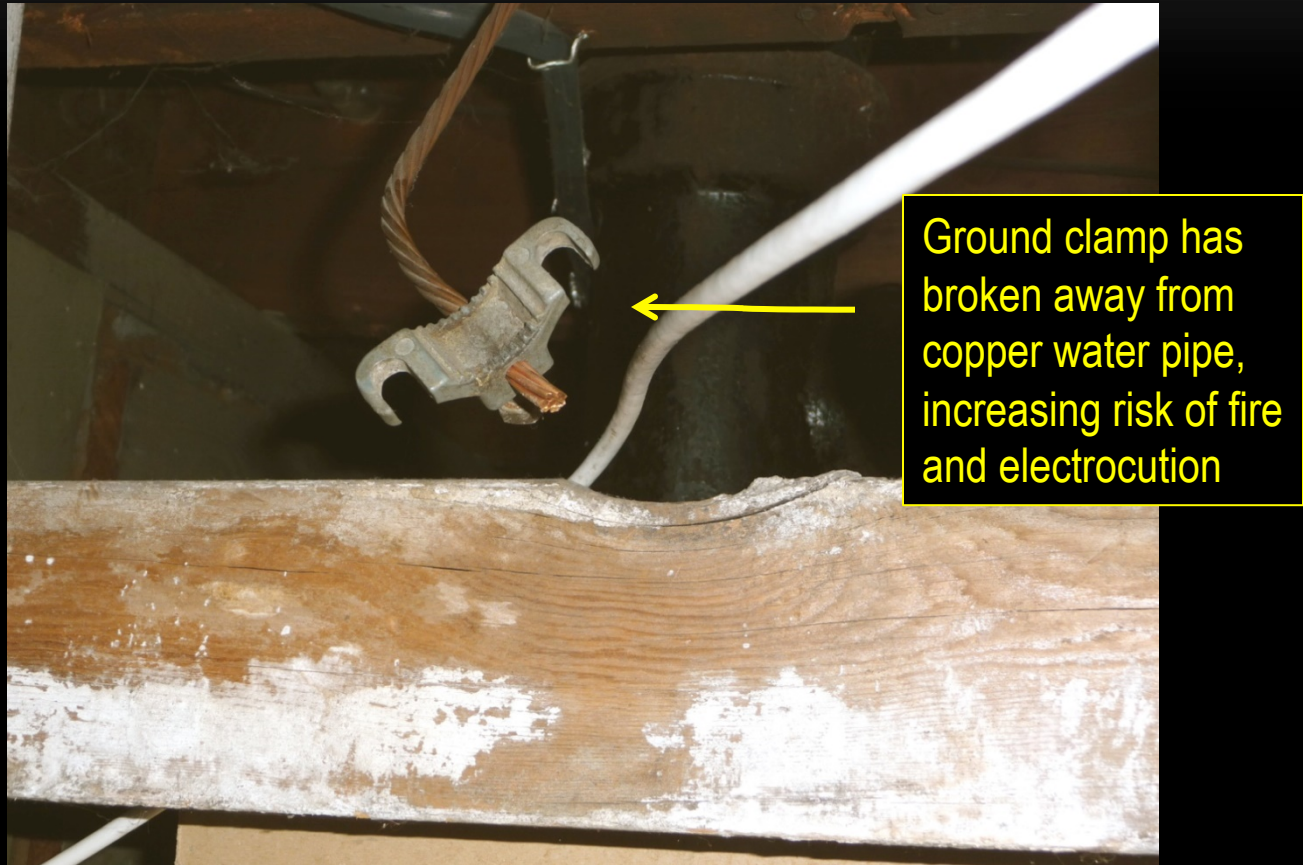
Deteriorated live conductors at service entrance of house, millimeters away from flashing and creating fire

# IMMEDIATE ATTENTION WAS REQUESTED



Within one hour  
homeowner had  
their electrician on  
site to prepare  
new installation of  
electrical service

# KEY FIRE HAZARDS IN OLDER HOUSES, DUE TO DETERIORATION





# HANDYMAN ADD-ONS



Multiple circuits  
hazardously  
installed, putting  
house at increased  
risk of electrical fire

# HANDYMAN ALTERATIONS



OLD HOUSES SHOULD TO BE CHECKED  
*THOROUGHLY* FOR ELECTRICAL SAFETY

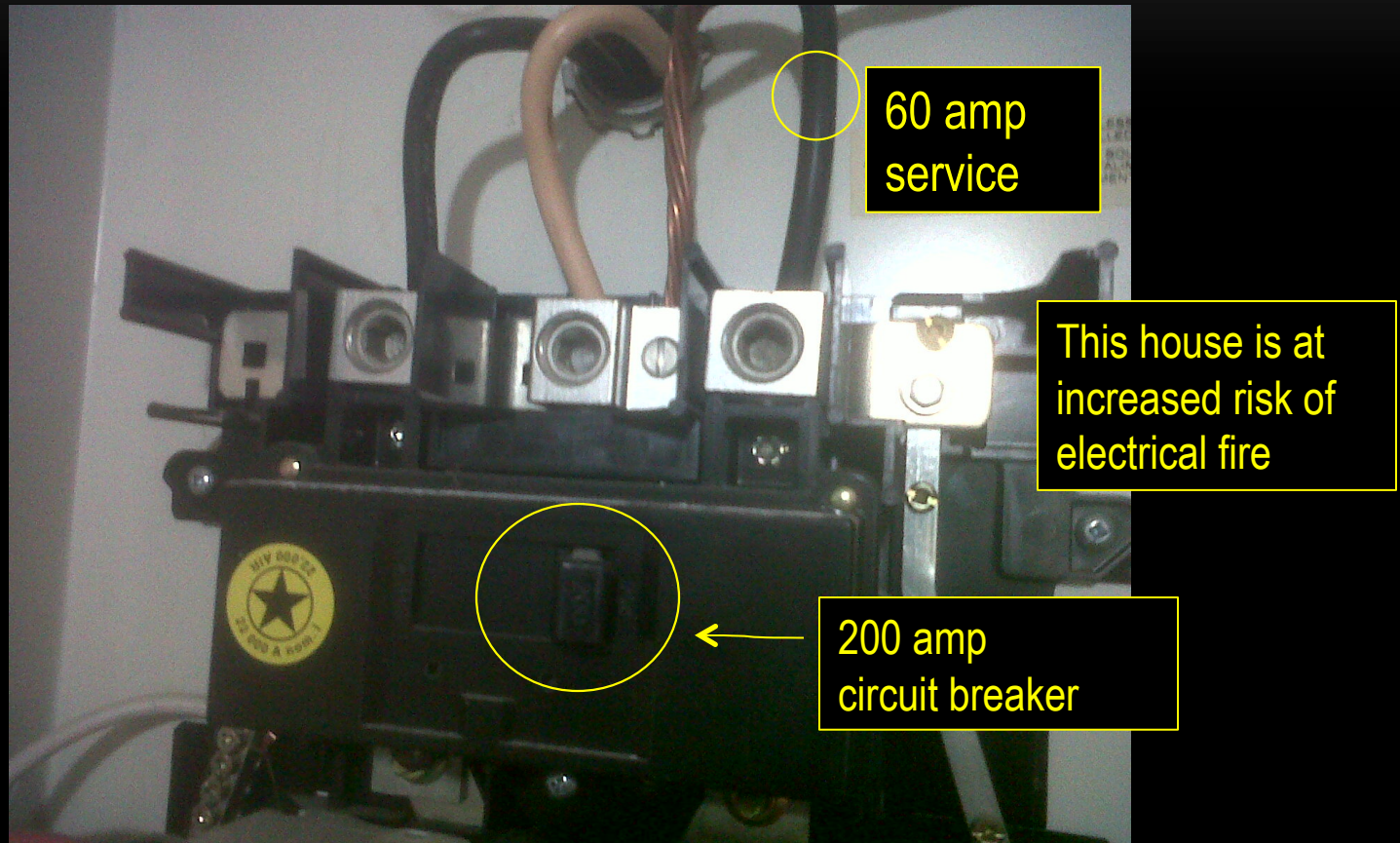




**IF IT HASN'T BEEN CHECKED  
SINCE NEW,  
IT'S HIGH TIME OVERDUE !**

---

# PROBLEMS WITH ELECTRICAL PANELS: OVERSIZED CIRCUIT BREAKERS





# OBSOLETE CIRCUIT BREAKERS



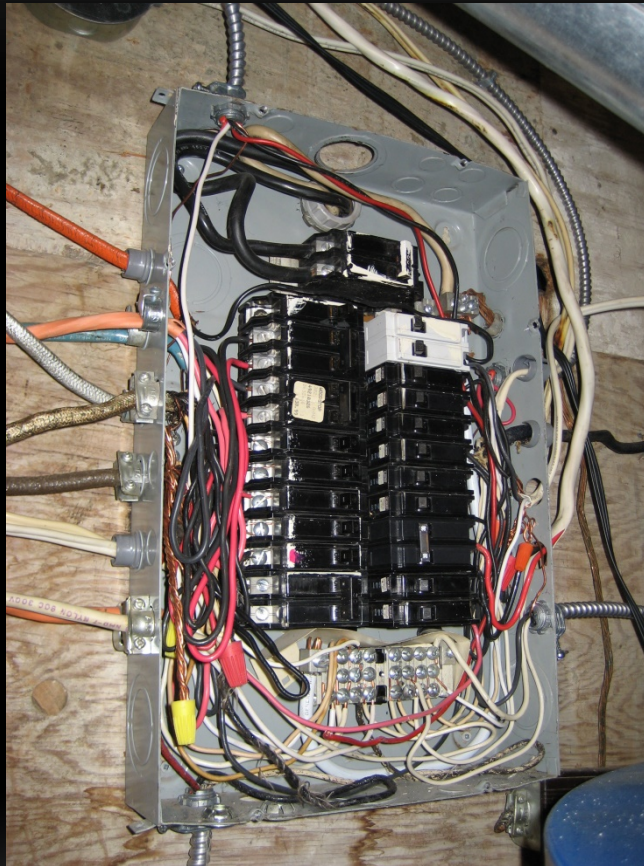
These circuit breakers, "Square D, Type XO" are no longer installed, as they do not meet modern specifications, putting house at increased risk of fire

# BURNT-OUT CIRCUIT BREAKERS



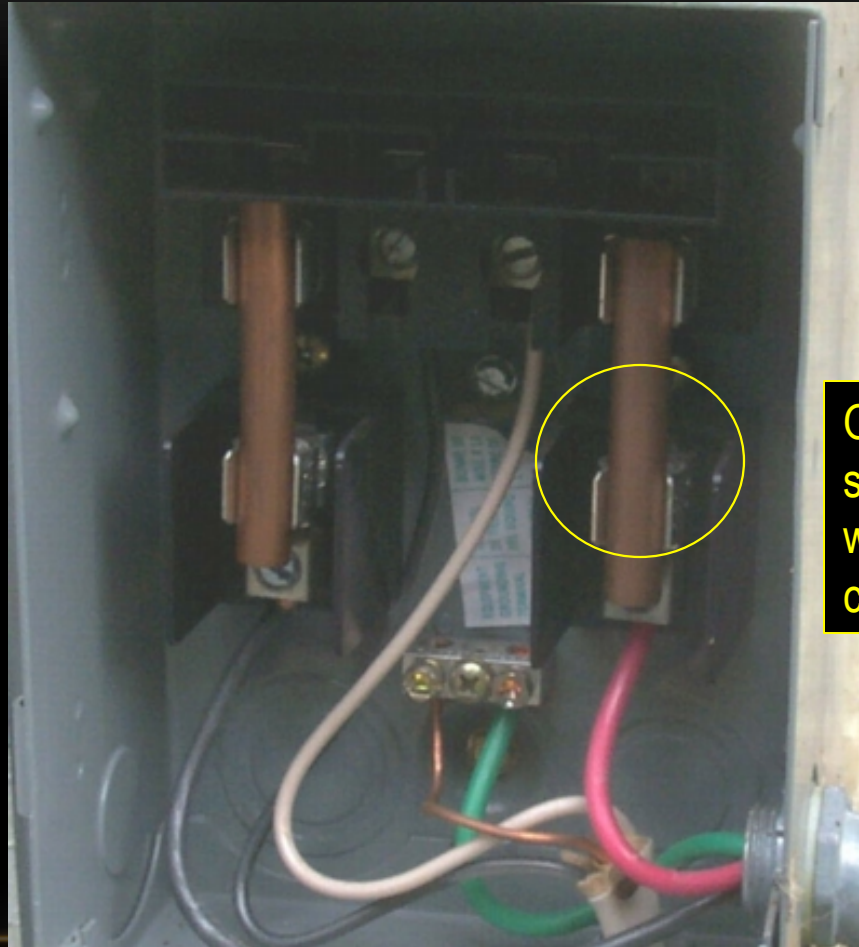


# LOOSE ELECTRICAL CONNECTIONS



As houses age, electrical connections often become loose, increasing risk of electrical fire

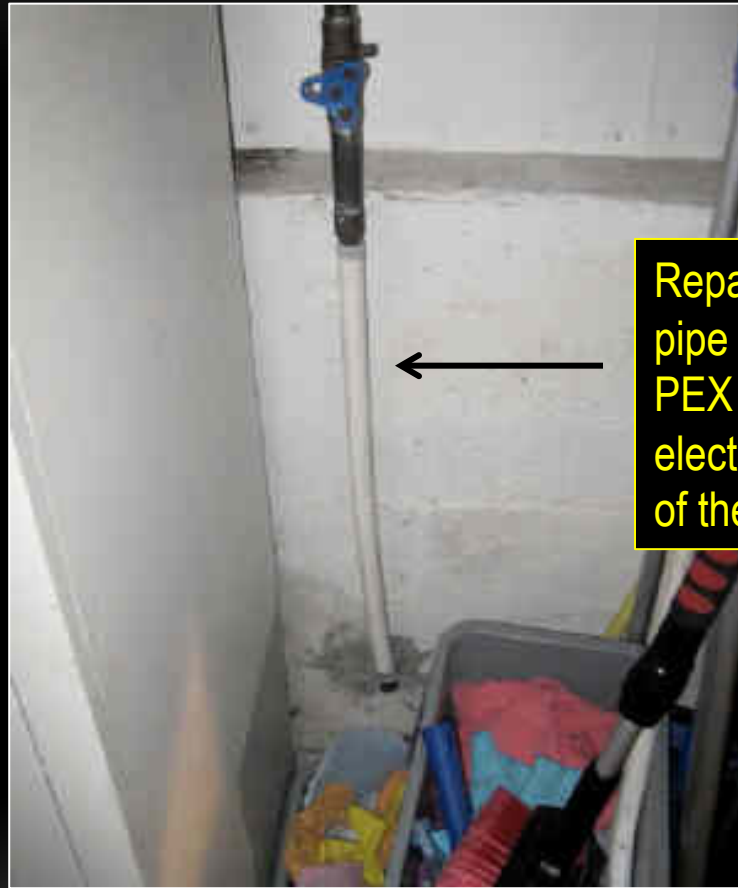
# AND ON OCCASION: A COMPLETE DISREGARD FOR SAFETY



Original main fuses, in service switch replaced with short lengths of copper water pipe



# SOME REPAIRS COMPROMISE THE ELECTRICAL SYSTEM



Repair of copper  
pipe with plastic  
PEX breaks the  
electrical grounding  
of the house

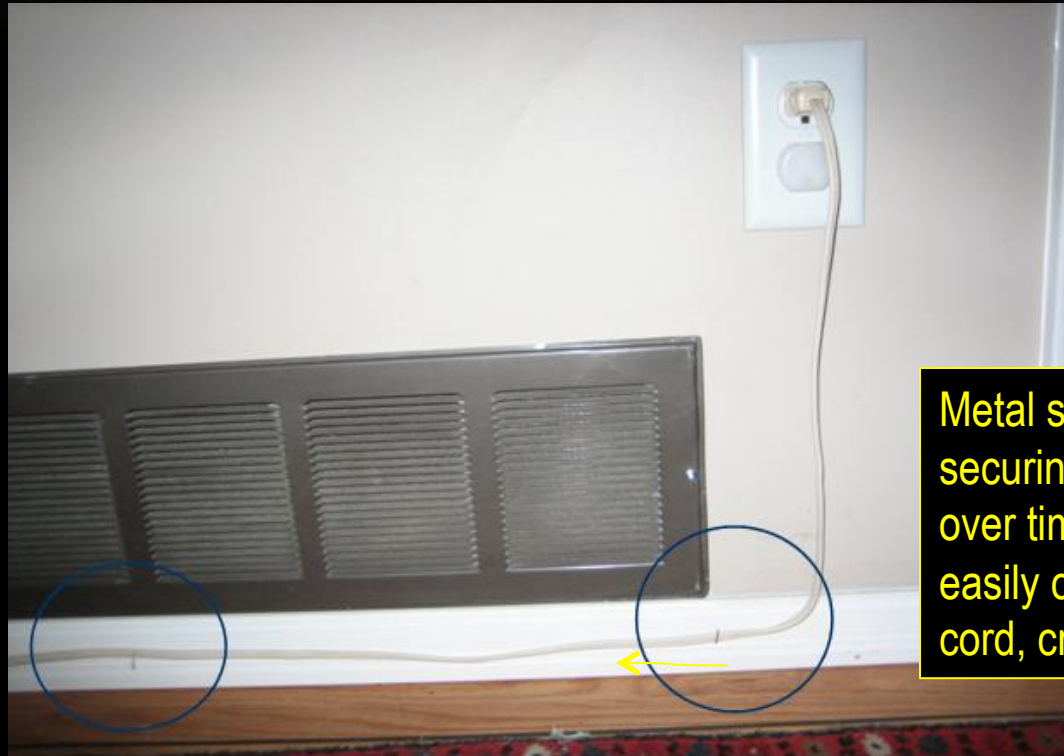
# IN OLD HOMES ELECTRICAL WIRES ARE OFTEN FOUND LIVE!



Live electrical conductor found millimeters from gas pipe

Often found in the basement, and sometimes in the vicinity of the gas pipe, live wire creates risk of fire and electrocution.

# SOME TIDY-UPS DONE BY HOMEOWNERS CREATE SERIOUS FIRE HAZARDS



Metal staples  
securing cord,  
over time can  
easily cut into the  
cord, creating fire



# SOME ACTIONS BY OCCUPANTS SET SCENARIO FOR FIRE



# IN OLDER HOUSES FIRE HAZARDS ARE EVERYWHERE!



Unfilled knock outs commonly called "Mouse holes" provide easy access to the warmth in an electrical box

09/08/2012 09:52

# CONNECTIONS NOT IN BOXES



Live electrical  
connections  
sandwiched between  
wooden boards



# IN OLD HOUSES HANDYMAN ADD-ON CIRCUITS ARE ABUNDANT



Installer failed to install an electrical box behind this dryer outlet, putting house at increased risk of fire

# BASEBOARD HEATER OFTEN FOUND HAZARDOUSLY INSTALLED



Installer failed to install a "box connector" to protect cable, putting house at increased risk of fire

# CABLES WITHOUT PROTECTION



Installer failed to install  
“Anti-short” on this cable  
to a new furnace,  
putting house at risk of  
fire”

09/08/2012 09:45



# ADD-ON LIGHT FIXTURES



Installer failed to install a junction box behind this add-on lampholder, putting house at increased risk of fire.

# KNOB AND TUBE HAS CONCERNS



# KNOB AND TUBE HAS SOLUTIONS





# ALUMINUM WIRE HAS CONCERNS



# ALUMINUM HAS SOLUTIONS: HOWEVER, COPPER PIGTAILING MAY INCREASE RISK



# CABLES FOR INDOORS ARE NOT FOR OUTDOORS



Old indoor cables have deteriorated, taped with duct tape by occupant. House is now at increased risk of fire.



# HANDYMAN ADD-ON CIRCUITS: OFTEN FOUND WITH NO REGARD FOR SAFETY







**WITH A THOROUGH ELECTRICAL CHECK-UP,  
ON A REGULAR BASIS, OLD HOUSES CAN  
REMAIN SAFE FOREVER**

**Thank you**